



META
META



Rodent Green Management



ECOLOGICALLY BASED RODENT MANAGEMENT

WHY ECOLOGICALLY BASED RODENT MANAGEMENT (EBRM)?

In Rodent Green we believe that to manage rodent populations and minimize their negative impacts, we need to clearly understand the ecological requirements of the rodents. Rodent populations are known to grow exponentially given the right conditions. We assess how the environmental circumstances are created in which rodent populations expand beyond acceptable levels. These acceptable levels vary in hospitals, food industry, croplands, plantations, storage areas, urban settings, ... Health risks, economic losses and hygiene standards define the specific tolerance levels.

In EBRM, our first step is 'to prevent' the surge of rodent populations by managing the local environment in such a way that rodent populations never grow beyond the tolerance levels. This means controlling access to food and water, reducing shelters and preventing migration. This requires hygienic, operational and construction measures. The second step is 'to control'. In case of infestation, the population is reduced by using natural enemies, mechanical measures and by applying bio-rodenticides. In addition to these services, we provide tailored trainings, setting up living labs and share our experiences.

HOW DO WE WORK?



We work closely with our clients and affected communities throughout the process of implementing effective rodent management. In this process, we follow three steps:

Step I: Client intake - Client intake to understand the extent of the problem, associated risks and the tolerance levels.

Step II: Field inspection - This includes the collection of all data necessary to understand the extent of the rodent problem at scale. In addition, the circumstances promoting the presence of rodents are mapped out and the possible harms to crops, plantations, humans, animals, storage and the environment are assessed.

Step III: Joint planning & implementation of EBRM action - This includes the selection of best suited measures and actions, tailored trainings and awareness activities and integration of EBRM operational procedures into the routine activities of the client.

For more, visit:

www.rodentgreen.com and www.metameta.nl

CLIENT INTAKE PROCESS

This marks the beginning of our in-depth relationship with clients. The process takes three steps:

- Introductory interview
- Filling in client intake form
- Understand clients' expectations and options as well as tolerance limits

INSPECTION ACTIONS

- Assess presence and assemblage of rodents using direct and indirect cues (live traps, camera traps, rub marks, faeces, gnaw marks, damages and other traces)
- Undertake species taxonomic identification
- Assess ecological conditions supporting the rodent population
- Understand magnitude of current population and habitat use
- Analyse environment parameters and migratory movements
- Assess clients' sanitary system, existing rodent management practices and condition of construction

JOINT PLANNING AND EBRM IMPLEMENTATION

- Identify the best suited EBRM actions from a pool of options available
- Plan comprehensive EBRM measures and actions including environmental control, population reduction schemes, prevention of migration and habitat preferences, operational and construction measures...
- Develop and implement staff training and general awareness campaign
- Monitoring plan and evaluation of actions plus adjustment of plan if necessary
- Ensure future incorporation of the actions into routine pest, waste and conservation management practices of clients.



META
META

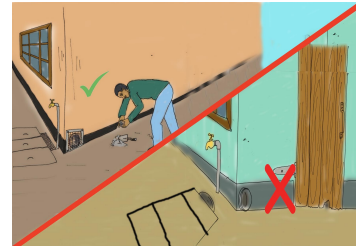


Rodent Green Management

EBRM action



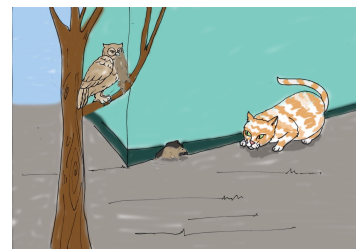
- 1- Reducing carrying capacity of rodent infested area by limiting access to food, water, and shelter**



- 2- Prevention of rodent migration and blocking/ interrupting their pathways**



- 3- Destroying rodent habitats and harborage**



- 4- Reducing rodent populations by enhancing the presence of predators**



- 5- Selective trapping and removal of rodents**